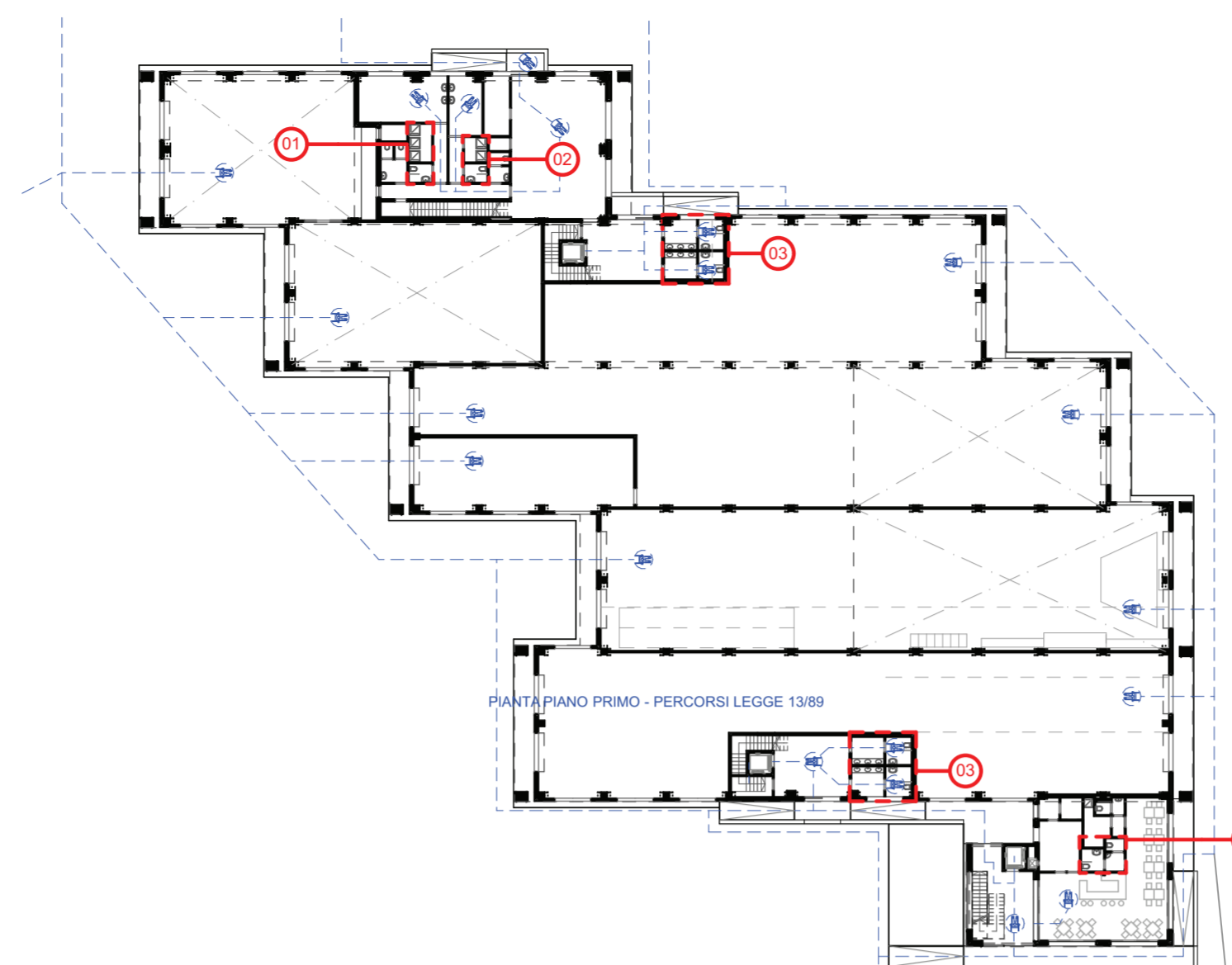
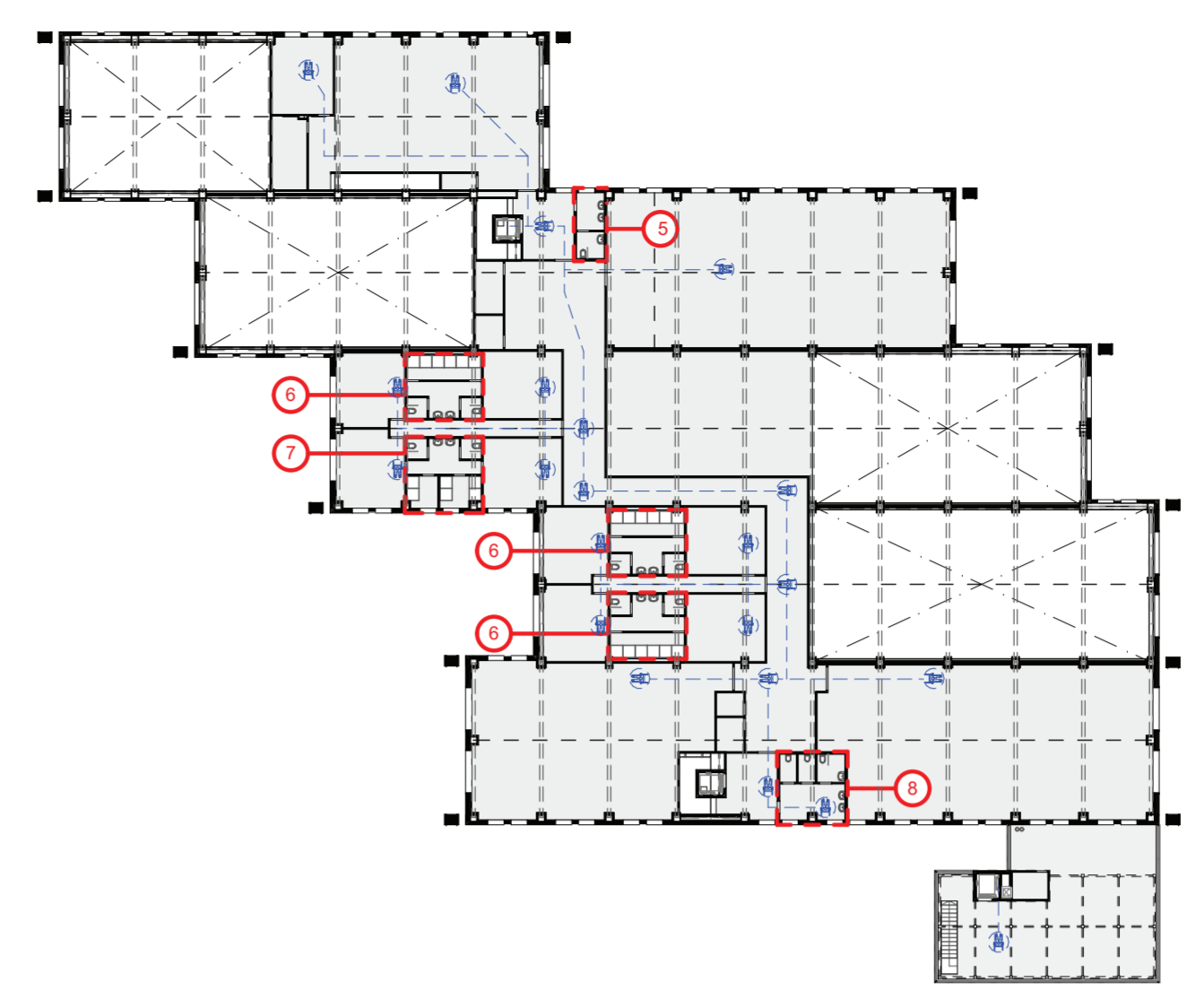


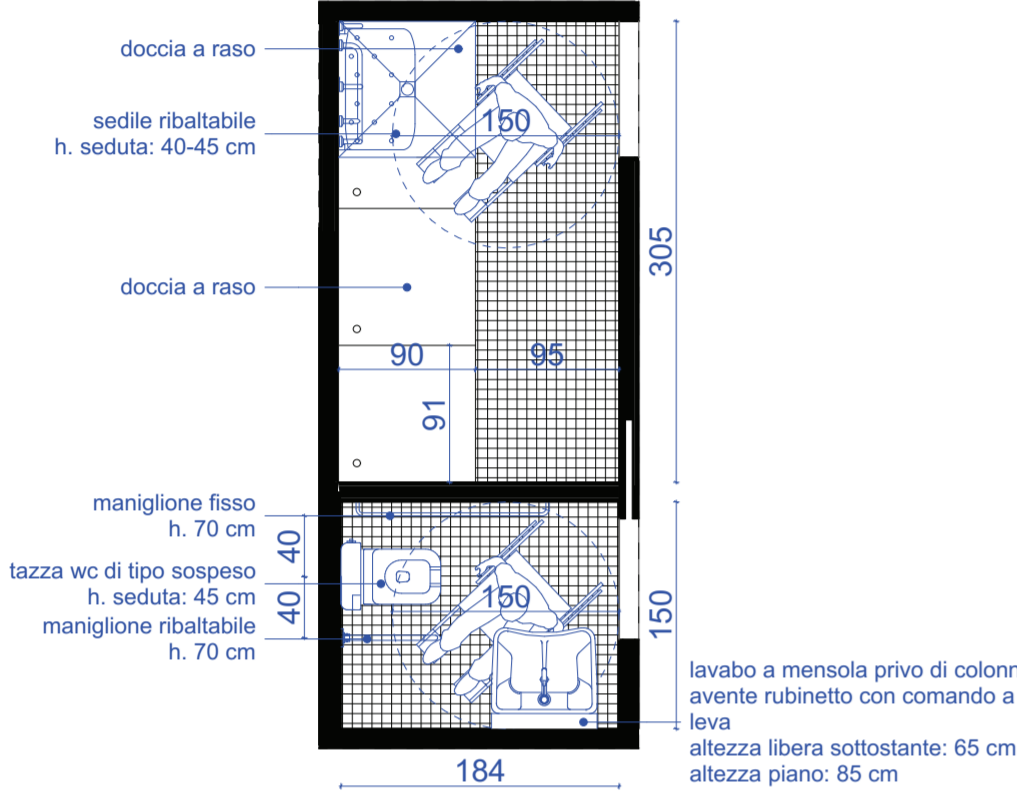
**Area:** Punta S. Giuliano  
**Progetto:** CI 14236 - 2.8.1. Rafforzamento azione P.A. - Ambiente e Territorio.  
 Aree verdi parco S. Giuliano: Riordino del Polo Nautico ed opere complementari  
**R.U.P.:** arch. Silvia Loreto  
**Tavola:** SUPERAMENTO BARRIERE ARCHITETTONICHE - DL 13/89 e s.m.l. - PLANIMETRIA PIANO PRIMO E DETTAGLI  
**Elab.:** **A24**  
**Codice:** 14236 **Progetto:** Definitivo **Data:** Maggio 2019 **Scala:** 1:500, 1:50  
**Progettisti:** dott.urb. Aldo Menegazzi, arch. Martina Guermani  
**Progetto strutture:** Al Progetti Architettura Ingegneria s.c., ing. Valentina Corras  
**Progetto impianti elettrici e termotecnici e speciali:** TFE Ingegneria srl, ing. Zeffirino Tommasin  
**Relazioni specialistiche, rilievi, service grafico, computazioni, capitolati e contratti:** ing. Filippo Ponchio



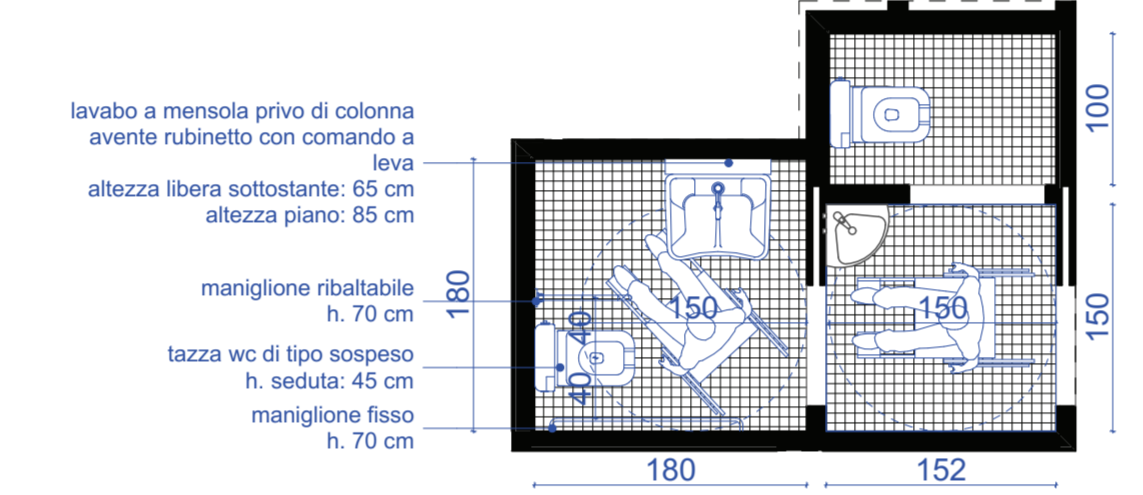
PIANTA PIANO TERRA - PERCORSI LEGGE 13/89 | SCALA 1:500



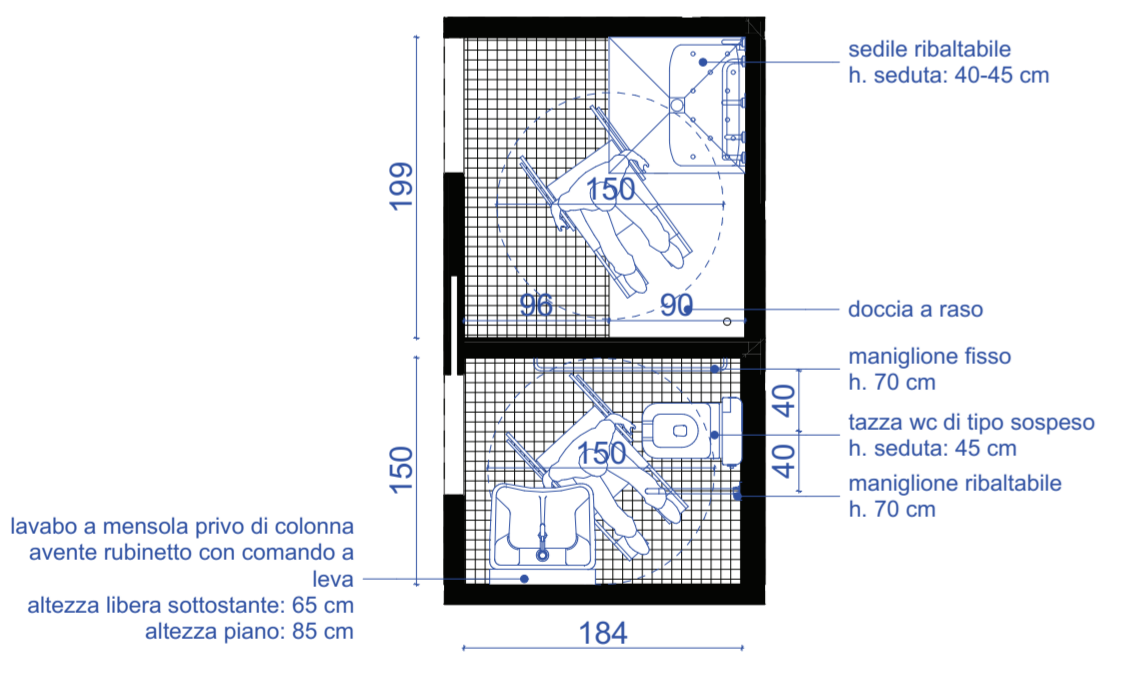
PIANTA PIANO PRIMO - PERCORSI LEGGE 13/89 | SCALA 1:500



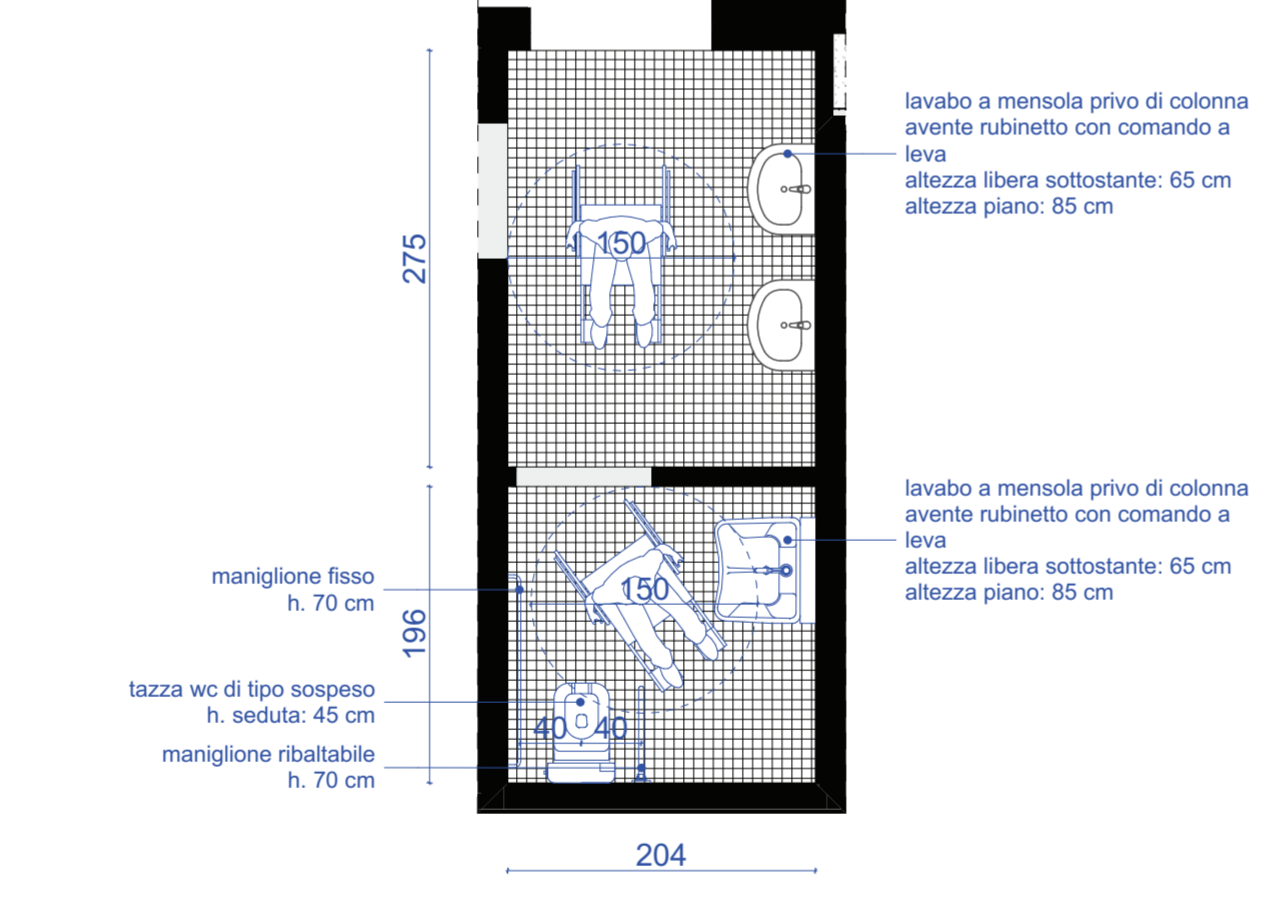
DETTAGLIO 01 | SCALA 1:50



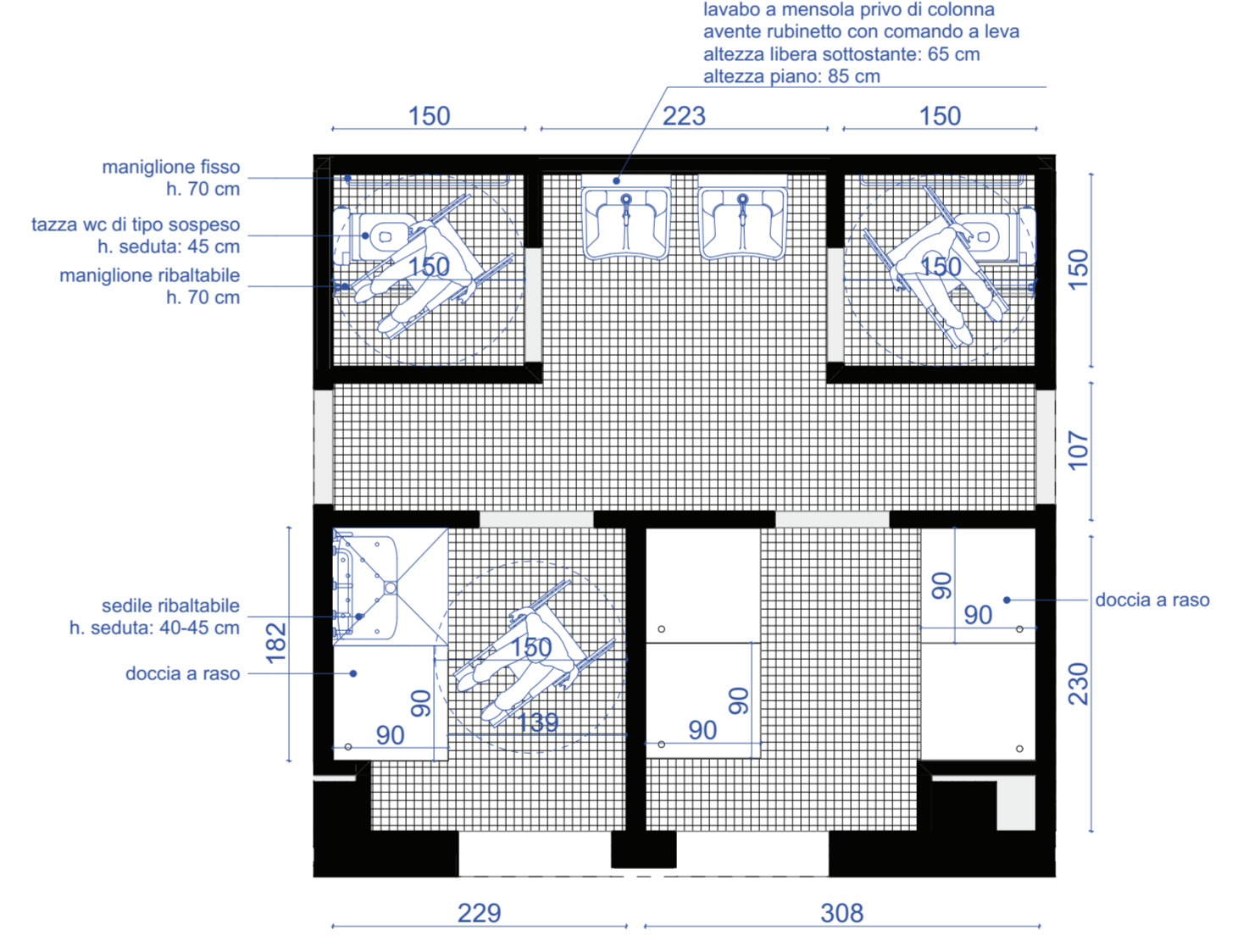
DETTAGLIO 04 | SCALA 1:50



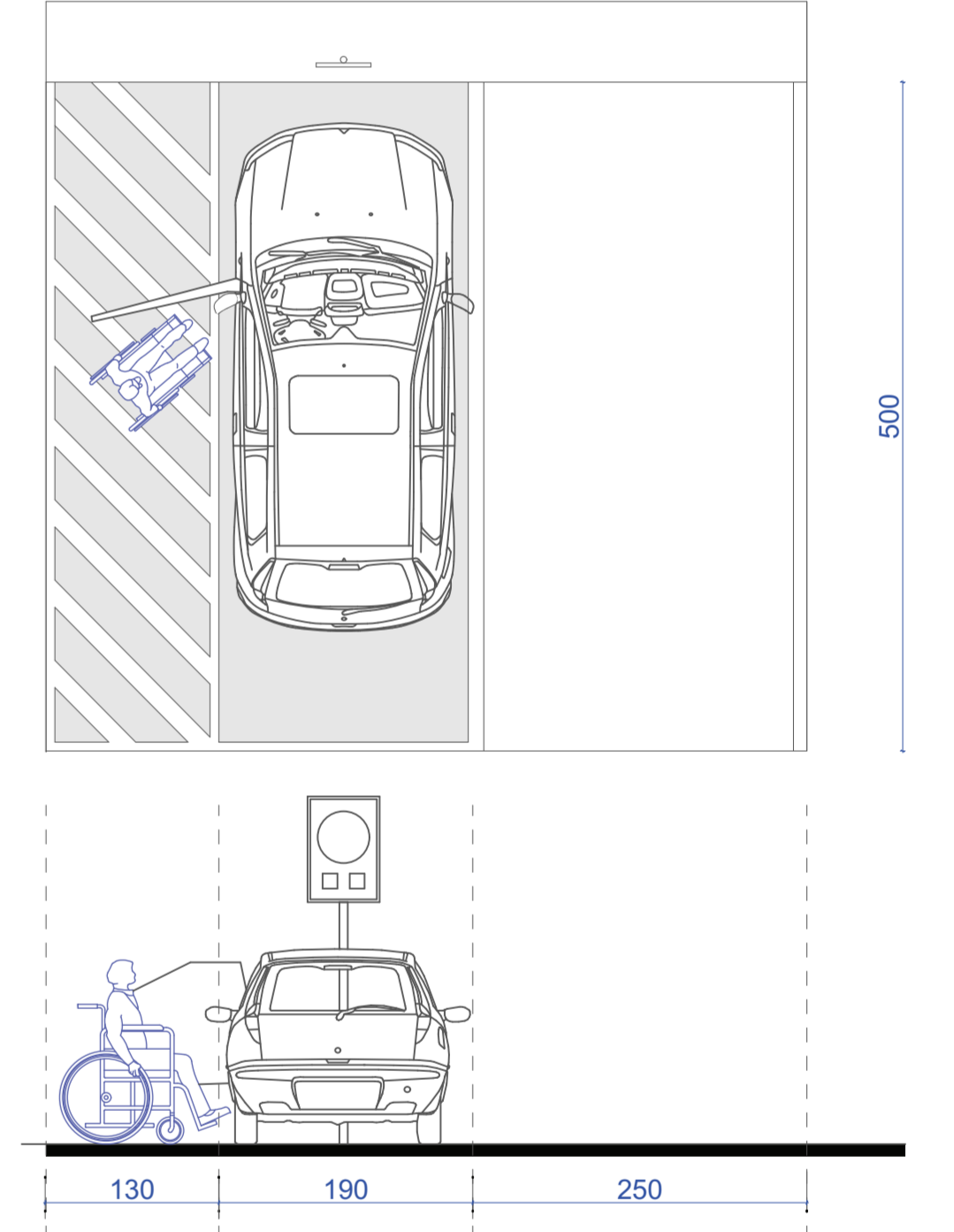
DETTAGLIO 02 | SCALA 1:50



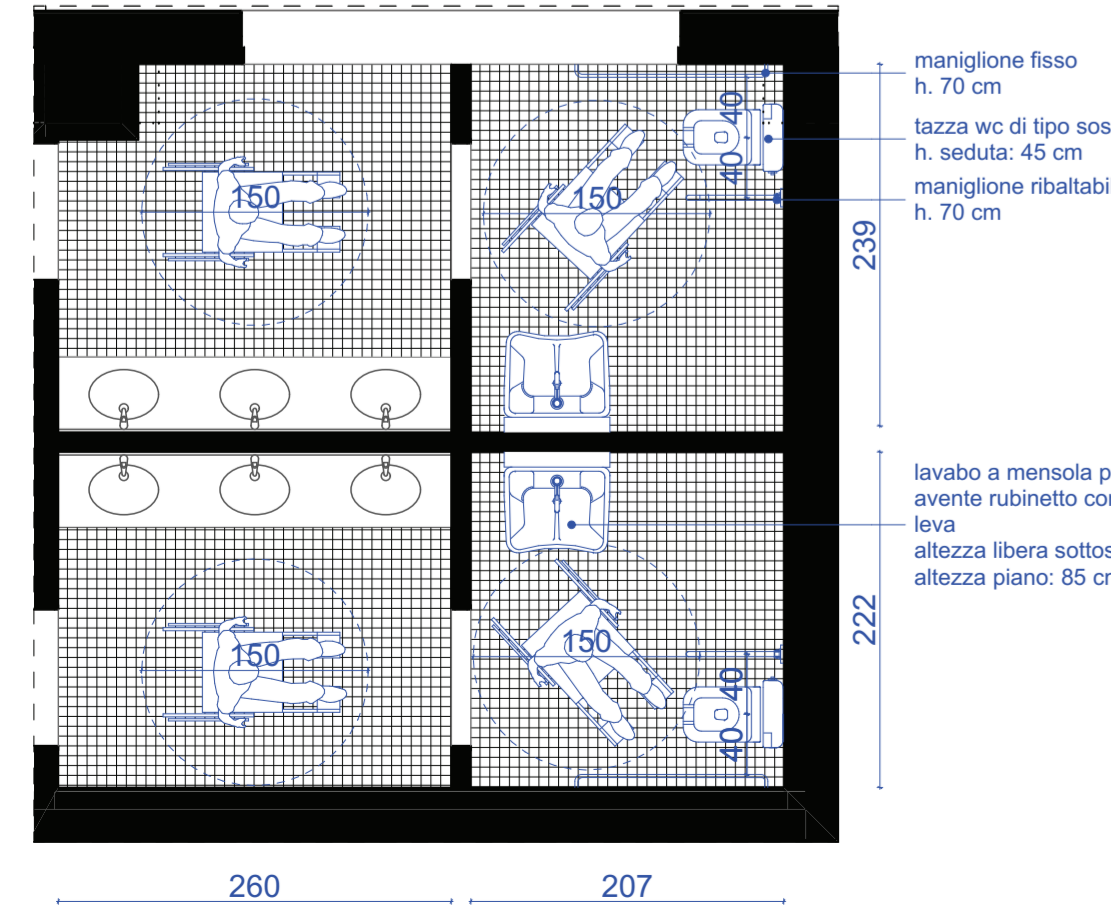
DETTAGLIO 05 | SCALA 1:50



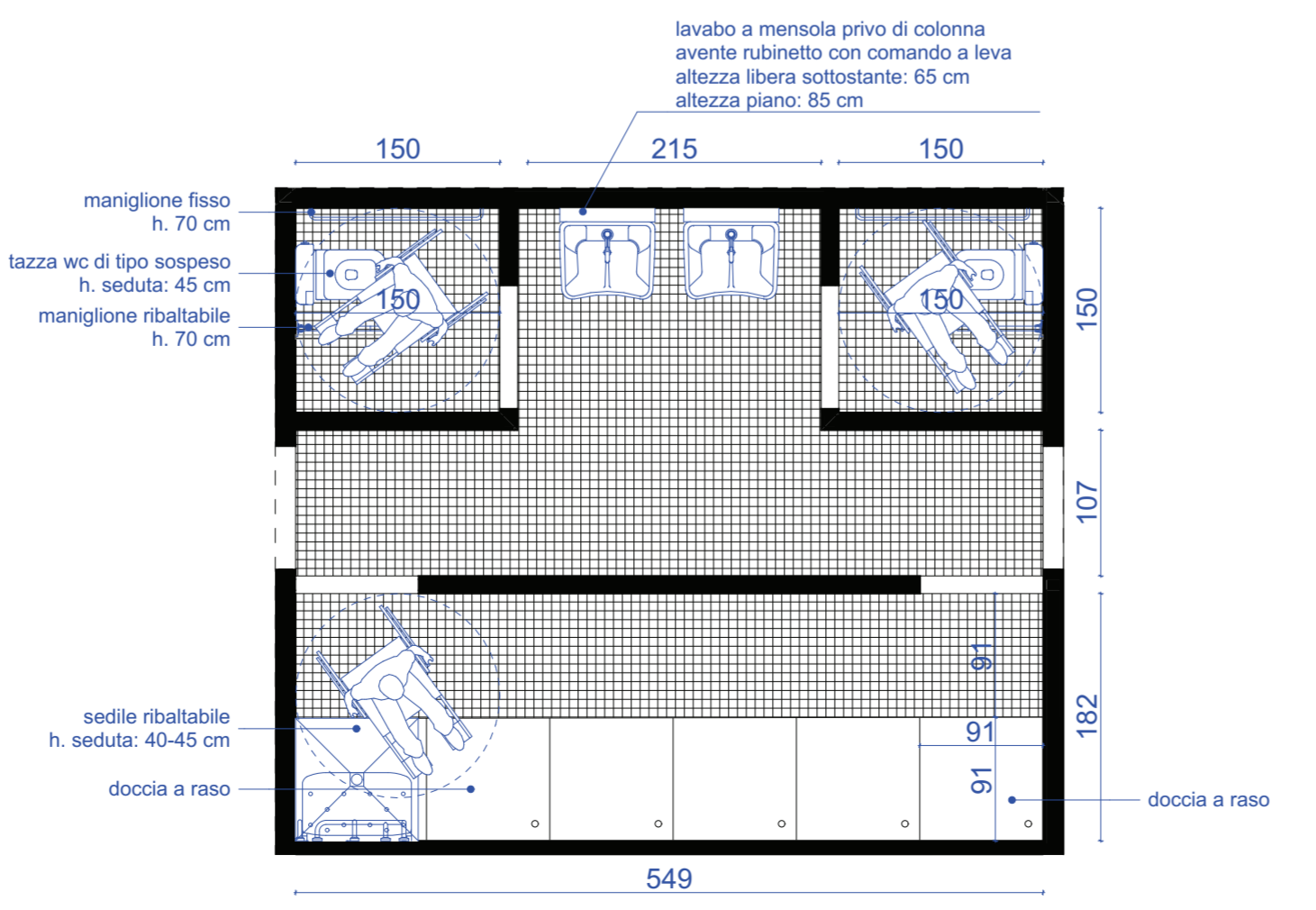
DETTAGLIO 07 | SCALA 1:50



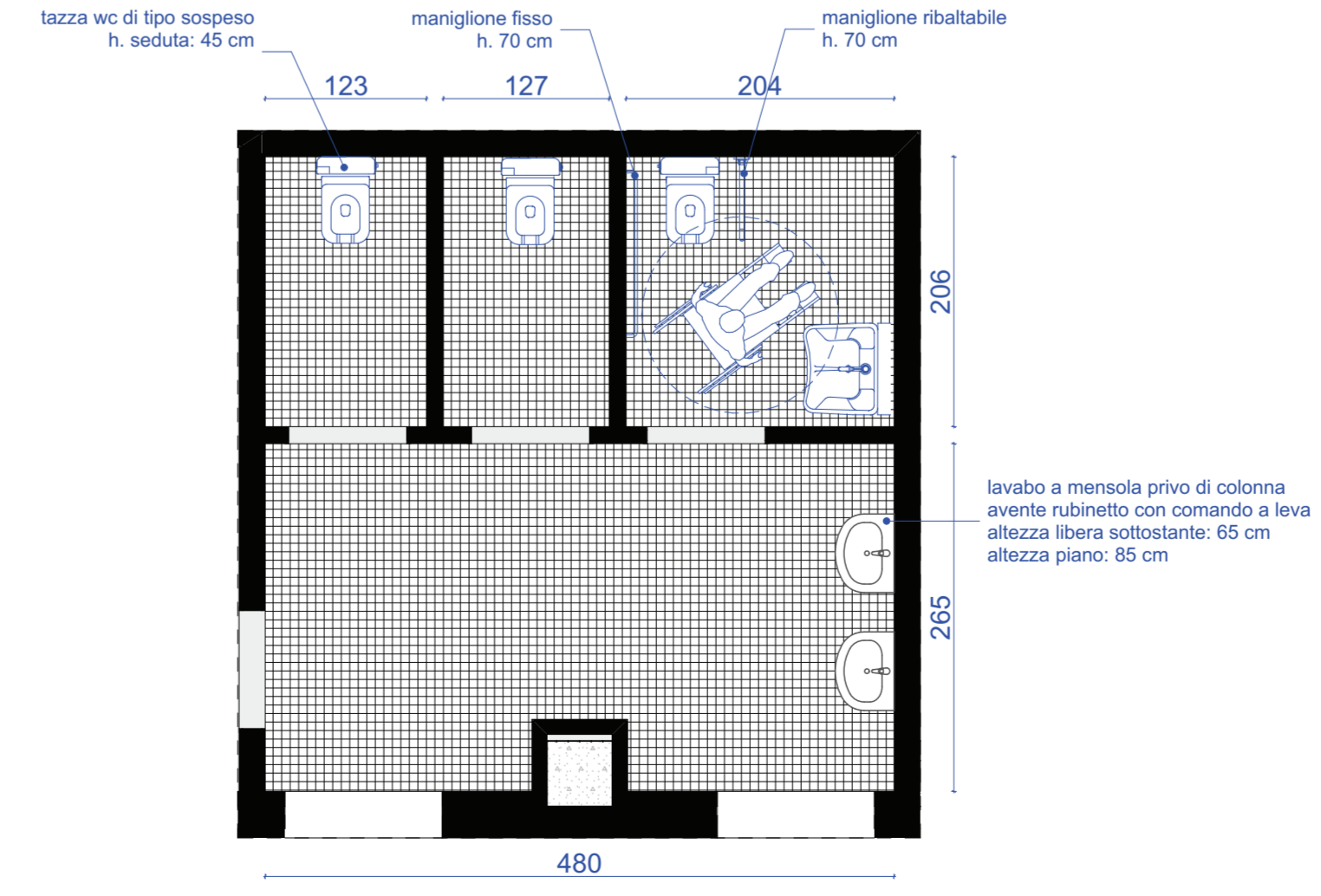
DETTAGLIO 10 (vedi tav. A23) | SCALA 1:50



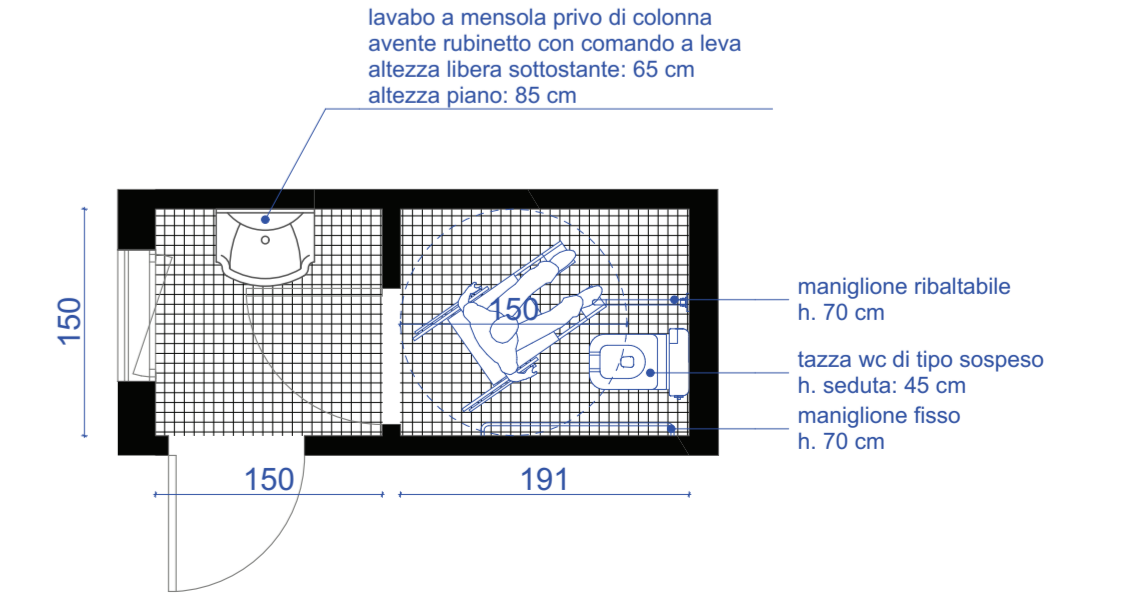
DETTAGLIO 03 | SCALA 1:50



DETTAGLIO 06 | SCALA 1:50



DETTAGLIO 08 | SCALA 1:50



DETTAGLIO 09 (vedi tav. A23) | SCALA 1:50